

SECTION 1

Description AXLE AND BOLSTER ASS'Y

Used On 911

[illegible]

Page No.	Description	Group No.	Code
1	<u>AXLE AND BOLSTER ASS'Y</u>	<u>911-09503</u>	
2	<u>BOLSTER</u>	<u>911-09604</u>	
3	<u>AXLE, ENGINE END</u>	<u>911-95074</u>	
4	<u>AXLE ASS'Y, ENGINE END</u>	<u>911-2004885</u>	
5	<u>AXLE ASS'Y, ENGINE END (CONT.)</u>	<u>911-2004885</u>	
6	<u>BRAKE ASS'Y, DISC</u>	<u>NA077WC101</u>	
7	<u>DIFFERENTIAL ASS'Y</u>	<u>NAH39974</u>	
8	<u>BRAKE AND CONTROL, PARKING BRAKE</u>	<u>911-16028</u>	
9	<u>CONTROL, PARKING BRAKE</u>	<u>911-16025</u>	
10	<u>BRAKE, PARKING</u>	<u>911-16026</u>	

Beginning Serial 911-2028 Ending Serial                     

Supercedes \_\_\_\_\_ Superceded By \_\_\_\_\_

**GIVE MACHINE SERIAL NUMBER WHEN ORDERING PARTS**

Issue Date 4-1-81

By GDS Ckd. WJC

Group No. 911-09503

## INDEX

1-2-1

[illegible]





911-09503

## AXLE AND BOLSTER ASS'Y

ITEM	PART NO.	QTY.	DESCRIPTION
1	911-09604**	1	BOLSTER
2	911-95074**	1	AXLE, ENGINE END
3	911-16028**	1	BRAKE AND CONTROL, PARKING/EMERGENCY

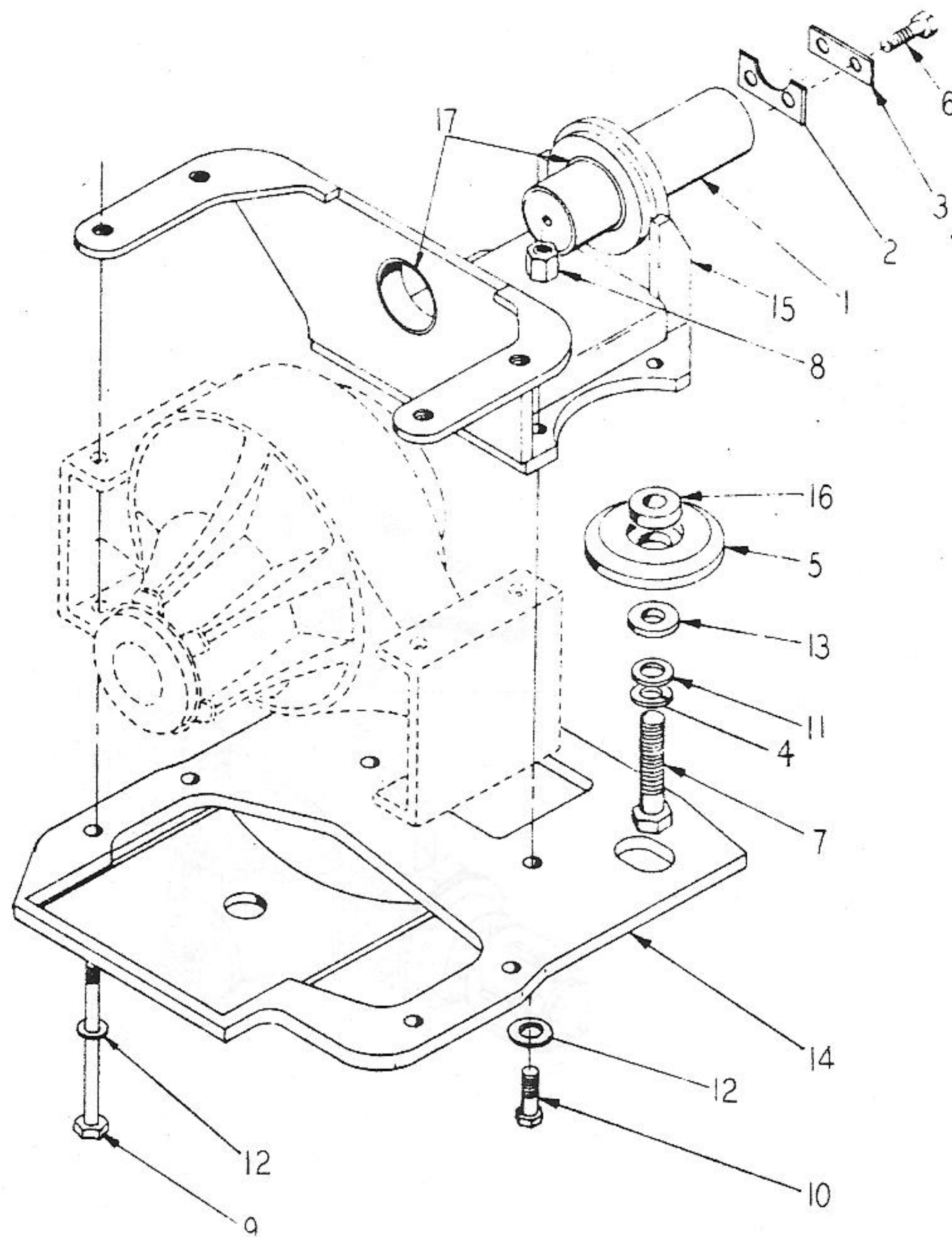
LEGEND: ☐ SOLD ONLY AS A KIT OR MATCHED SET

\*\* SERVICEABLE PARTS OF THIS ASSEMBLY ARE SHOWN SEPARATELY UNDER THE ASSEMBLY NUMBER

GIVE MACHINE SERIAL NUMBER WHEN ORDERING PARTS

EFFECTIVE SER





911-09604  
BOLSTER

ITEM	PART NO.	QUAN.	DESCRIPTION
1	HRB314	1	PIN
2	LLA33	1	PLATE, LOCK
3	LPA30	1	PLATE, KEEPER
4	W12GF	2	WASHER, LOCK
5	SXA5	2	BUMPER, RUBBER
6	T10GG32	2	SCREW, CAP
7	T12GG44	2	SCREW, CAP
8	L261	4	NUT, HIGH
9	T12ZG192	4	SCREW, CAP
10	T12ZG48	4	SCREW, CAP
11	W12GB	2	WASHER, FLAT
12	W12HB	8	WASHER, FLAT
13	W16GA	2	WASHER, FLAT
14	911-96002	1	PAN, BELLY
15	911-96015	1	BOLSTER ASSEMBLY (INCLUDES ITEM 17)
16	912-96029	2	SPACER
17	GSA64L	2	BEARING

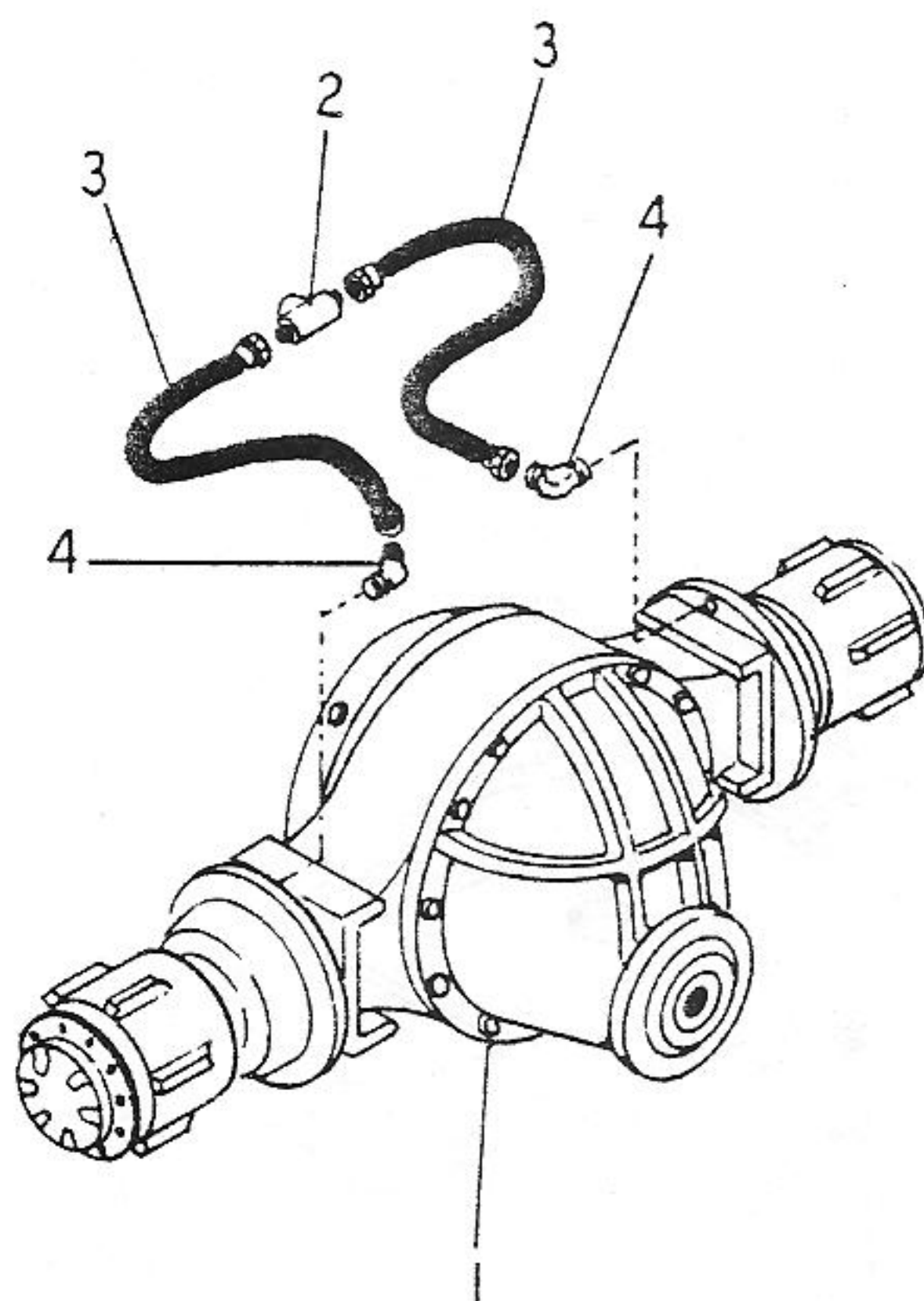
LEGEND: ☐ SOLD ONLY AS A KIT OR MATCHED SET

\*\* SERVICEABLE PARTS OF THIS ASSEMBLY ARE SHOWN SEPARATELY UNDER THE ASSEMBLY NUMBER

GIVE MACHINE SERIAL NUMBER WHEN ORDERING PARTS

EFFECTIVE SER





911-95074

2AXLE, ENGINE END

ITEM	PART NO.	QUAN.	DESCRIPTION
1	911-2004885**	1	AXLE ASSEMBLY
2	911-67007	1	FITTING ASSEMBLY
3	VA835	2	HOSE ASSEMBLY
4	VU4F4E20CS	2	FITTING
5	XA1329	10 QRTS.	OIL, MULTI-PURPOSE GEAR (NOT SHOWN)

LEGEND: ☐ SOLD ONLY AS A KIT OR MATCHED SET

\*\* SERVICEABLE PARTS OF THIS ASSEMBLY ARE SHOWN SEPARATELY UNDER THE ASSEMBLY NUMBER

GIVE MACHINE SERIAL NUMBER WHEN ORDERING PARTS

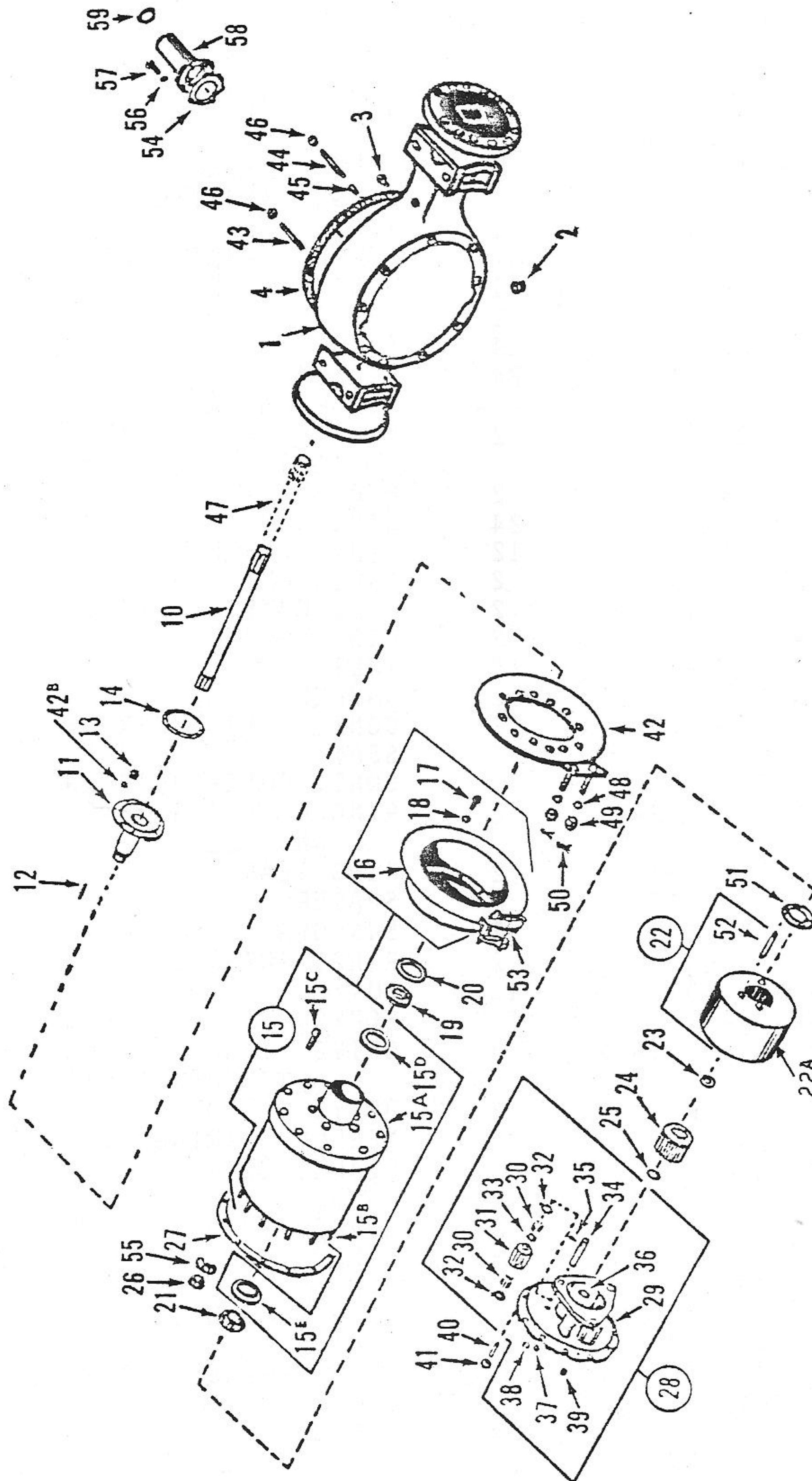
EFFECTIVE SER

911-95074

REV. \_\_\_\_\_

1-2-1

PAGE 3 OF 10







911-2004885

4 AXLE ASS'Y, ENGINE END

ITEM	PART NO.	QTY.	DESCRIPTION
1	NAH52366	1	AXLE HOUSING
2	NAH501041	1	PLUG, MAGNETIC DRAIN
3	NA077HN111	1	VENT
4	-----	A/R	FORMED GASKET(SEE NOTE #1)
10	NAH39978	1	SHAFT, AXLE
11	NA077SP100	2	SPINDLE
12	NAH47523	24	STUD
13	NAH503946	24	LOCKNUT
14	-----	A/R	FORMED GASKET(SEE NOTE #1)
15	NAH48715	2	HUB ASS'Y(CONSIST OF ITEMS 15A THRU 18)
15A	NAH39820	2	HUB
15B	NAH504438	24	STUD
15C	NAH504400	12	STUD, WHEEL
15D	NAH500624	2	CUP, INNER BEARING
15E	NAH181-41	2	CUP, OUTER BEARING
16	NAH46923	2	DISC, BRAKE
17	NAH506928	12	BOLT
18	NAH103325	12	WASHER, LOCK
19	NAH500625	2	CONE, INNER BEARING
20	NAH500628	2	SEAL
21	NAH501098	2	CONE, OUTER BEARING
22	NA077GT103-X	2	RING GEAR ASS'Y (INCLUDES ITEMS #52 AND #22A)
22A	NA077GT102	2	RING GEAR
23	NA077HS112	2	SPACER
24	NA077GS110	2	SUN GEAR
25	NAH500632	2	RING, RETAINING
26	NAH504401	12	NUT
27	-----	A/R	FORMED GASKET(SEE NOTE #1)
28	NA077SD104-2X	2	DRIVE FLANGE AND PLANETARY GEAR ASS'Y (INCLUDES ITEMS 29 THRU 39)
29	NA077SD103	2	DRIVE FLANGE
30	NAH504658	300	NEEDLE BEARING (QTY.-50 PER GEAR)
31	NA077GS111	6	PLANET GEAR
32	NAH45178	12	WASHER
33	NAH45192	6	SPACER
34	NAH52792	6	PIN
35	NAH457008	6	PIN
36	NA077HS113	2	WASHER, THRUST
37	NAH444667	2	PLUG
38	NAH501041	2	PLUG, MAGNETIC DRAIN
39	NAH444704	2	PLUG
40	NAH504427	24	DOWEL
41	NAH503946	24	LOCKNUT

LEGEND: ☐ SOLD ONLY AS A KIT OR MATCHED SET

\*\* SERVICEABLE PARTS OF THIS ASSEMBLY ARE SHOWN SEPARATELY UNDER THE ASSEMBLY NUMBER

GIVE MACHINE SERIAL NUMBER WHEN ORDERING PARTS

EFFECTIVE SER





911-2004885

4

AXLE ASS'Y, ENGINE END

ITEM	PART NO.	QTY.	DESCRIPTION
42	NAH52501	2	MOUNTING, CALIPER
42B	NA077HN112	24	WASHER
43	NAH49266	6	STUD
44	NAH49267	4	STUD
45	NAH504427	4	DOWEL
46	NAH503027	10	LOCKNUT
47	NAH39977	1	SHAFT, AXLE
48	NAH506780	4	WASHER
49	NAH218488	4	NUT
50	NAH103387	4	PIN, COTTER
51	NA077HN109	2	LOCKNUT
52	NA077HP101	2	PIN, ROLL
53	NA077WC101**	2	CALIPER, BRAKE(SEE PAGE 6 OF 10)
54	NAH37572	1	GASKET
55	NAH504671	12	LUG, WHEEL
56	NAH103331	3	WASHER, LOCK
57	NAH271547	3	BOLT
58	NAH52583	1	PINION COVER, SHIPPING
59	NAH52579	1	END PLATE, PINION COVER
--	NAH53513	1	NAME PLATE(NOT SHOWN)
--	NAH121279	4	SCREW, DRIVE(NOT SHOWN)
--	NAH39974**	1	CARRIER ASS'Y(NOT SHOWN, SEE PAGE 7 OF 10)

NOTE #1: CUSTOMER MAY SUBSTITUTE SILICONE ADHESIVE/SEALANT  
EQUAL OR EQUIVALENT TO RTV-732 DOW CORNING IN PLACE  
OF GASKET.

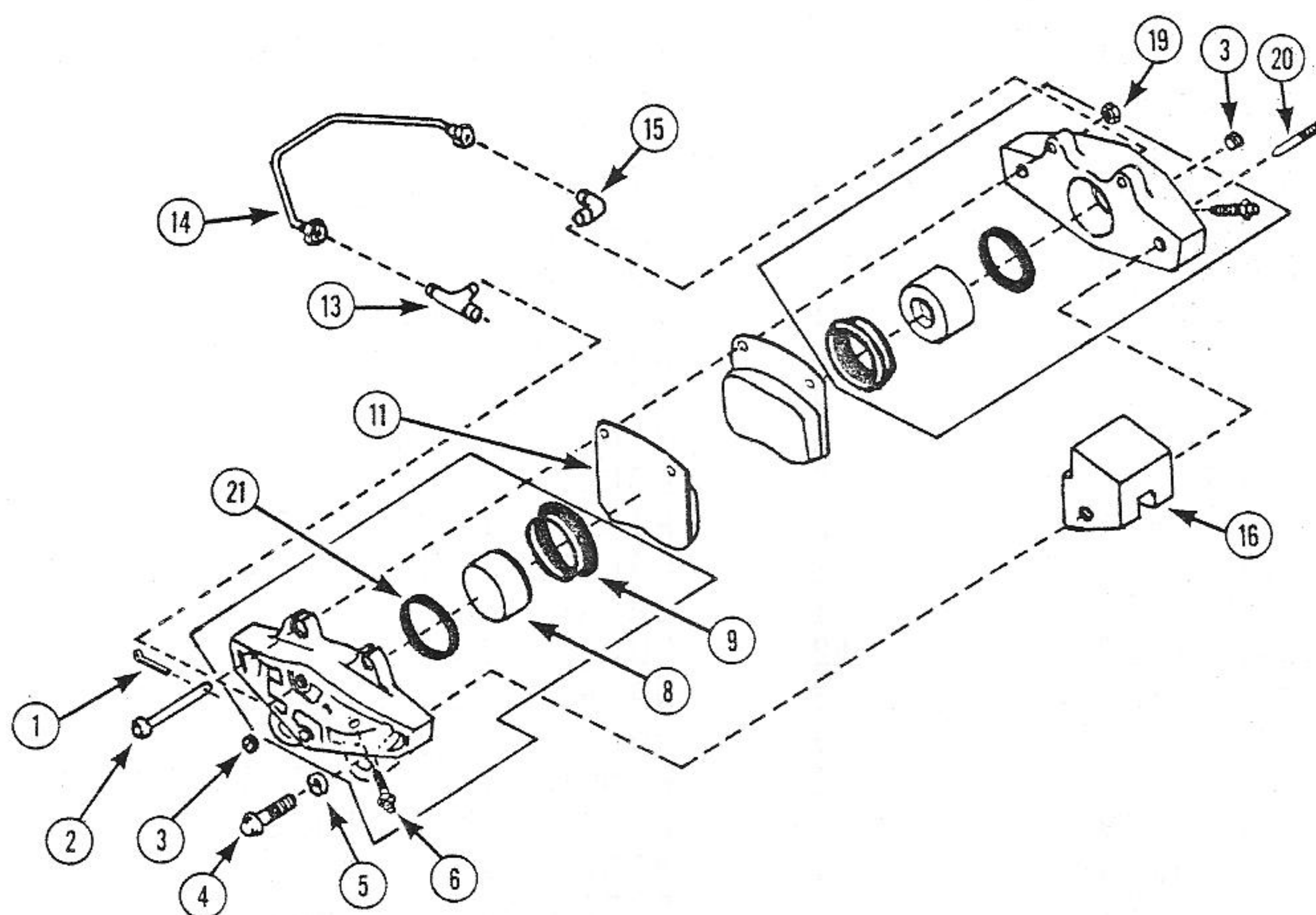
LEGEND: ☐ SOLD ONLY AS A KIT OR MATCHED SET

\*\* SERVICEABLE PARTS OF THIS ASSEMBLY ARE SHOWN SEPARATELY UNDER THE ASSEMBLY NUMBER

GIVE MACHINE SERIAL NUMBER WHEN ORDERING PARTS

EFFECTIVE SER





NA077WC101  
BRAKE CALIPER

ITEM	PART NO.	QTY.	DESCRIPTION
1	NA077KC118	2	PIN, COTTER
2	NA077KC117	2	PIN, ANCHOR
3	NA077KC116	2	PLUG
4	NA077KC115	4	SCREW
5	NA077KC114	4	WASHER, FLAT
6	NA077KC113	4	VENT
8	NA077KC121	2	PISTON, WHEEL CYLINDER
9	NA077KC122	2	BOOT
11	NA077KC123	2	SHOE & LINING ASS'Y, DISC BRAKE
13	NA077KC124	1	TEE, FLARE TUBE
14	NA077KC125	1	TUBING, BRAKE
15	NA077KC126	1	ELBOW, FLARE TUBE
16	NA077KC131	2	SPACER, BRAKE CYLINDER
19	NA077KC128	2	WASHER, FLAT
20	NA077KC129	2	PIN, DRIVE
21	NA077KC134	2	O-RING

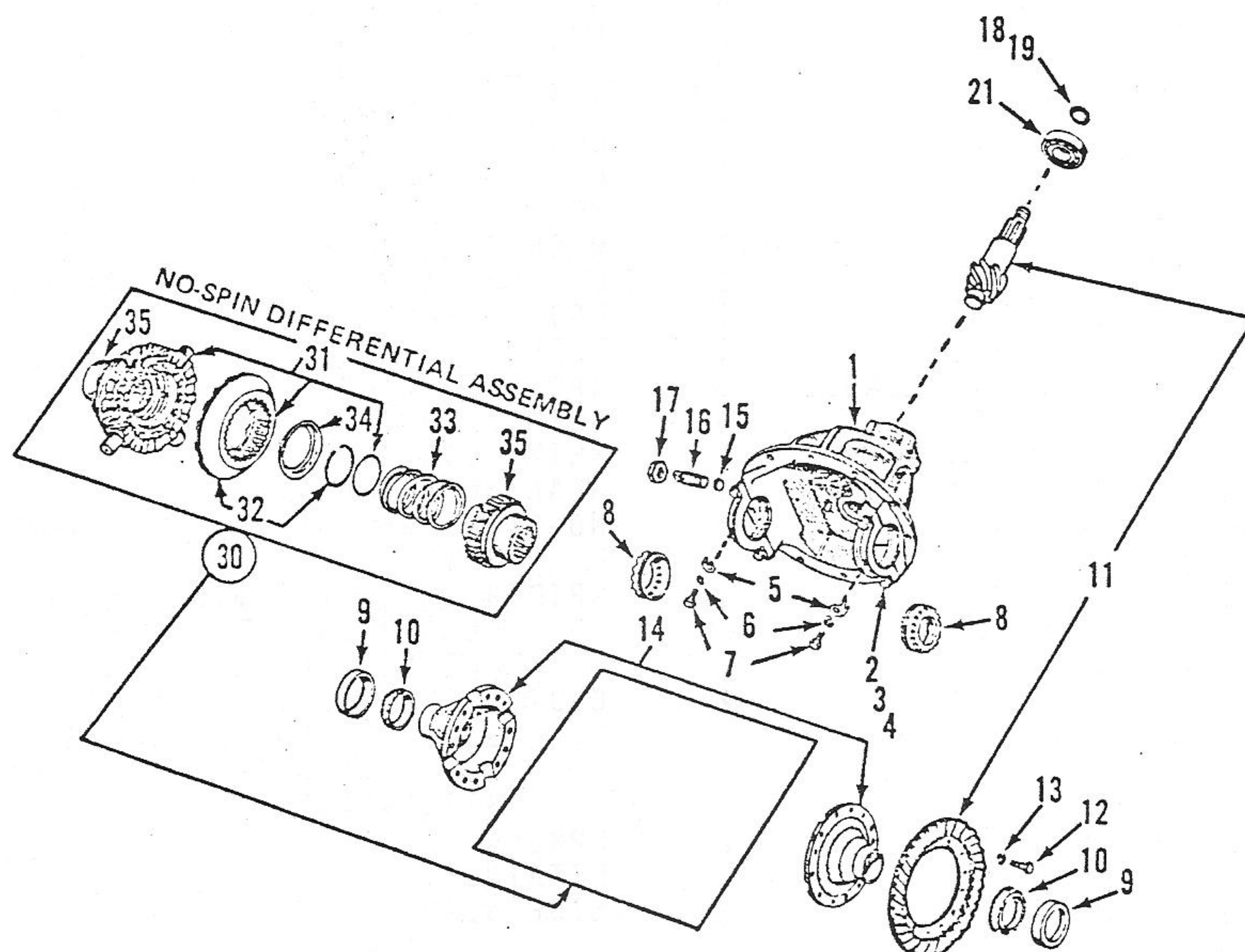
LEGEND:   SOLD ONLY AS A KIT OR MATCHED SET

★★ SERVICEABLE PARTS OF THIS ASSEMBLY ARE SHOWN SEPARATELY UNDER THE ASSEMBLY NUMBER

GIVE MACHINE SERIAL NUMBER WHEN ORDERING PARTS

EFFECTIVE SER









NAH39974  
CARRIER ASS'Y

ITEM	PART NO.	QTY.	DESCRIPTION
1	NAH45023	1	CARRIER HOUSING AND CAP ASS'Y
2	NAH9427812	4	BOLT
3	NAH103331	4	WASHER, LOCK
4	NAH30205	4	DOWEL
5	NAH37570	2	LOCK
6	NAH103320	2	WASHER, LOCK
7	NAH9419030	2	BOLT
8	NAH37546	2	LOCKNUT
9	NA077HA101-1	2	CUP, BEARING
10	NA077HB101-1	2	CONE, BEARING
11	NAH45229	1	RING GEAR AND PINION ASS'Y
12	NAH37573	12	BOLT
13	NAH103329	12	WASHER, LOCK
14	NAH37547	1	DIFFERENTIAL CASE AND COVER ASS'Y
15	NAH37543	1	PAD, THRUST
16	NAH37545	1	SCREW
17	# NOT AVAILABLE	1	JAM NUT, 7/8"-14
18	NAH39998	4	SHIM, .002"
19	NAH39999	4	SHIM, .003"
21	NA077HD103-1	1	BEARING, BALL
30	NAH504857	1	NO-SPIN ASS'Y (INCLUDES ITEMS 31 THRU 35)
31	NAH506614	1	SPIDER ASS'Y (CONSIST OF SPIDER, CENTER CAM, AND SNAP RING WHICH ARE NOT SERVICED SEPARATELY)
32	NAH506615	2	CLUTCH AND HOLDOUT RING ASS'Y (CONSIST OF CLUTCH MEMBER AND HOLD-OUT RING WHICH ARE NOT SERVICED SEPARATELY)
33	NAH506616	2	SPRING
34	NAH506617	2	RETAINER
35	NAH506618	2	SIDE GEAR

LEGEND: ☐ SOLD ONLY AS A KIT OR MATCHED SET

\*\* SERVICEABLE PARTS OF THIS ASSEMBLY ARE SHOWN SEPARATELY UNDER THE ASSEMBLY NUMBER

GIVE MACHINE SERIAL NUMBER WHEN ORDERING PARTS

EFFECTIVE SER

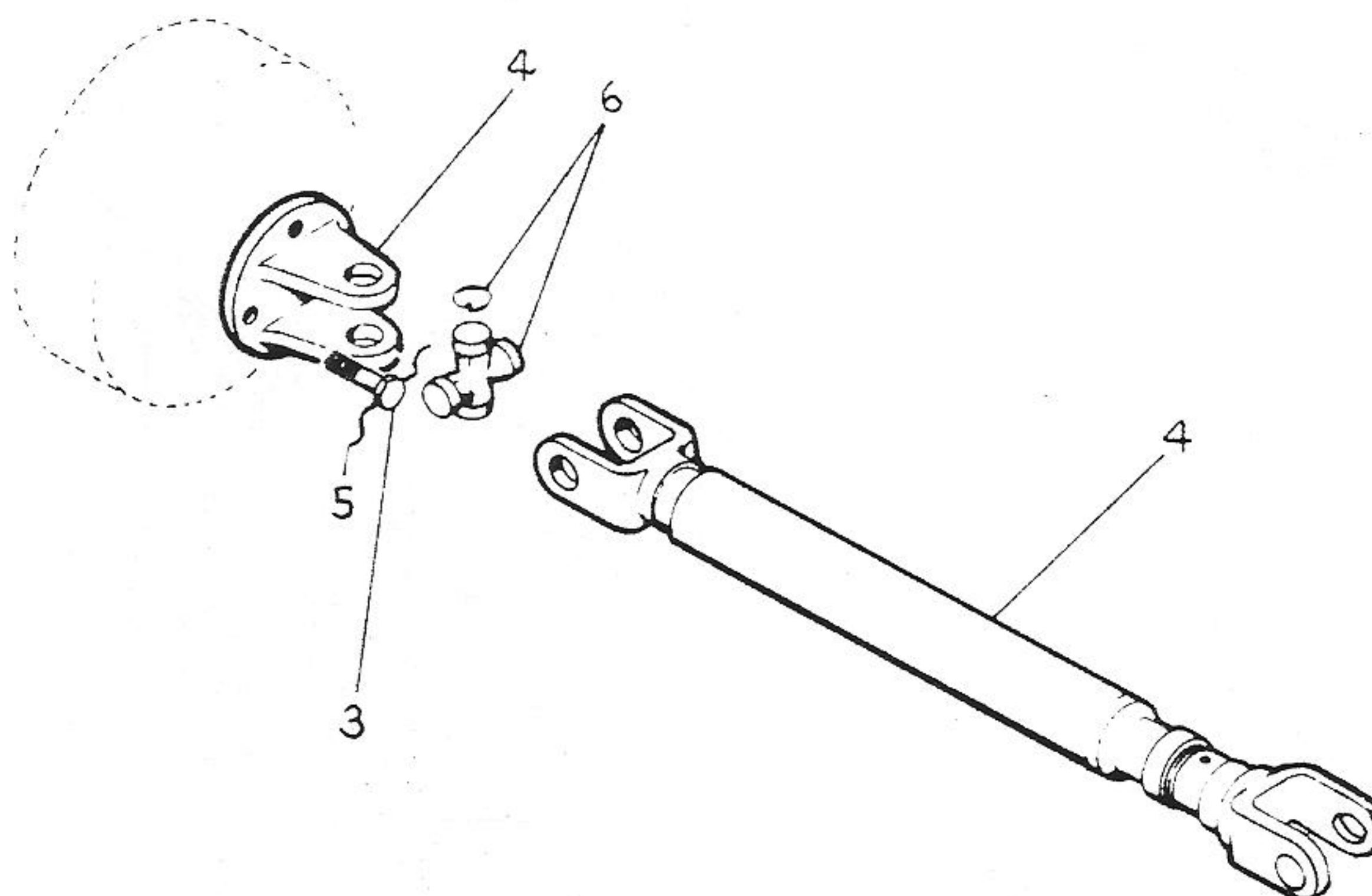
NAH39974

REV. \_\_\_\_\_

1-2-1

PAGE 7 OF 10





911-16028

BRAKE &amp; CONTROL, PARKING/EMERGENCY

③

ITEM	PART NO.	QUAN.	DESCRIPTION
-	<u>911-16025</u> ★	1	CONTROL GROUP, PARKING
-	<u>911-16026</u> ★	1	BRAKE GROUP, PARKING
3	T7ZFW16	8	SCREW, CAP
4	911-15005	1	DRIVE LINE ASSEMBLY
5	L400	4	WIRE, LOCK

911-15005 ★

DRIVE LINE (ROCKWELL STANDARD SERIES) - (SEE NOTE)

ITEM	PART NO.	QUAN.	DESCRIPTION
6	911A15010	2	CENTER PARTS KIT

911-15016 ★

DRIVE LINE (SPICER SERIES) - (SEE NOTE)

ITEM	PART NO.	QUAN.	DESCRIPTION
6	SP5-160X	2	CENTER PARTS KIT

NOTE: FOR REPLACEMENT DRIVELINES AND CENTER PARTS KIT, THE 911B LHD (WITH DEUTZ FYL912W ENGINE), THE 911C LHD (FORMERLY DESIGNATED 911-31 LHD, WITH PERKINS 4.154 ENGINE) AND THE 901-2G LHD (FORMERLY DESIGNATED 911-2G LHD, ELECTRIC POWERED) MUST USE PART NUMBER 911-15005. THE 911 LHD (WITH DEUTZ F3L912W ENGINE) MAY USE EITHER

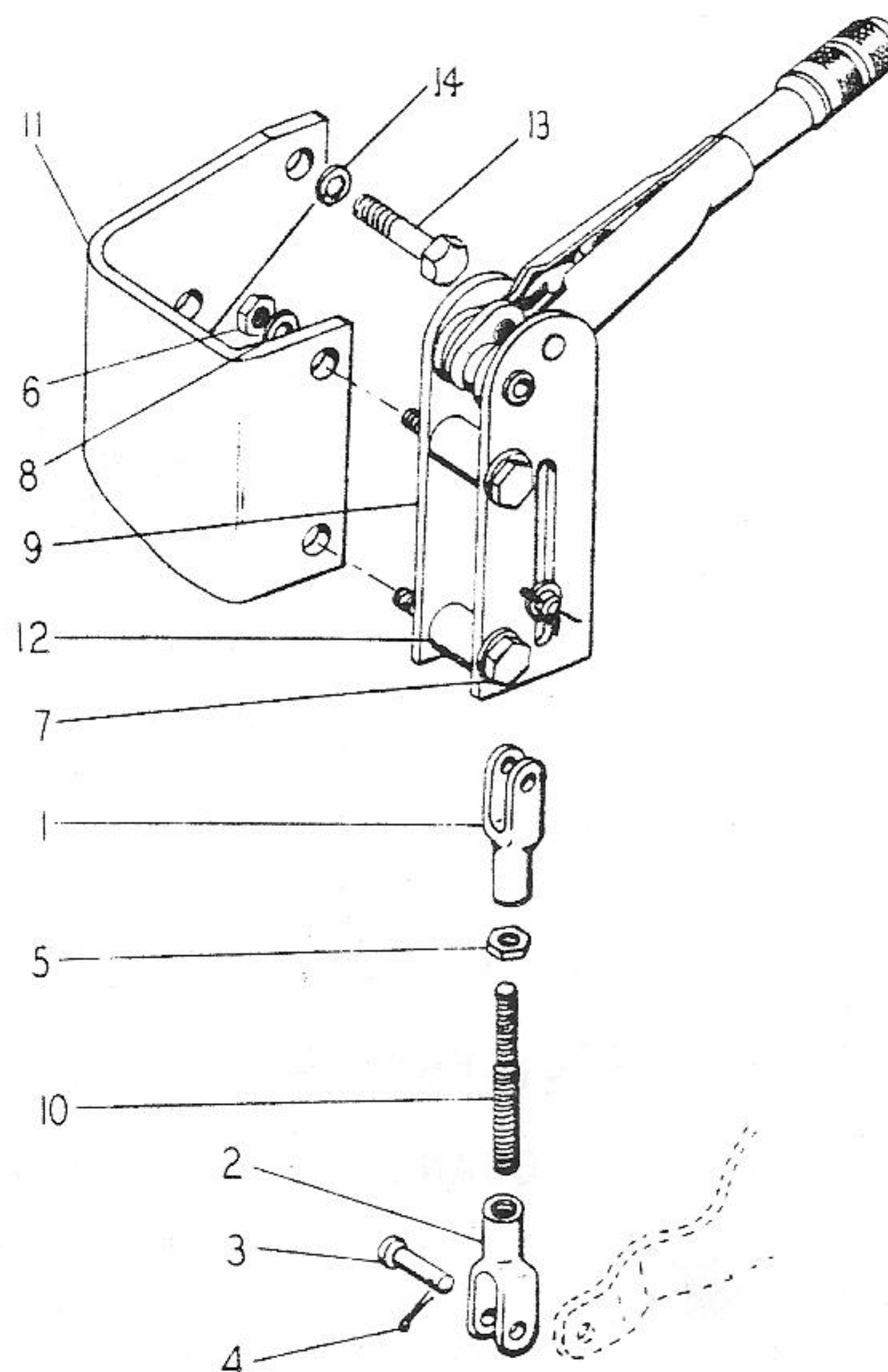
LEGEND:   SOLD ONLY AS A KIT OR MATCHED SET

\*\* SERVICEABLE PARTS OF THIS ASSEMBLY ARE SHOWN SEPARATELY UNDER THE ASSEMBLY NUMBER

GIVE MACHINE SERIAL NUMBER WHEN ORDERING PARTS

EFFECTIVE SER





**911-16025 \***  
**CONTROL GRP, PARKING BRAKE**  
 REV. 3

ITEM	PART NO.	QUAN.	DESCRIPTION
1	HRA13	1	YOKE
2	HRA14	1	YOKE
3	HRA4	1	PIN
4	L108	1	PIN, COTTER
5	T5HQ	1	NUT, JAM
6	T6GG	2	NUT
7	T6GG32	2	SCREW, CAP
8	W6GF	2	WASHER, LOCK
9	016-16002	1	LEVER
10	911-16021	1	ROD
11	911-16020	1	BRACKET
12	912-2930650	2	SPACER
13	T7HG32	2	CAP SCREW
14	W7GF	2	WASHER, LOCK

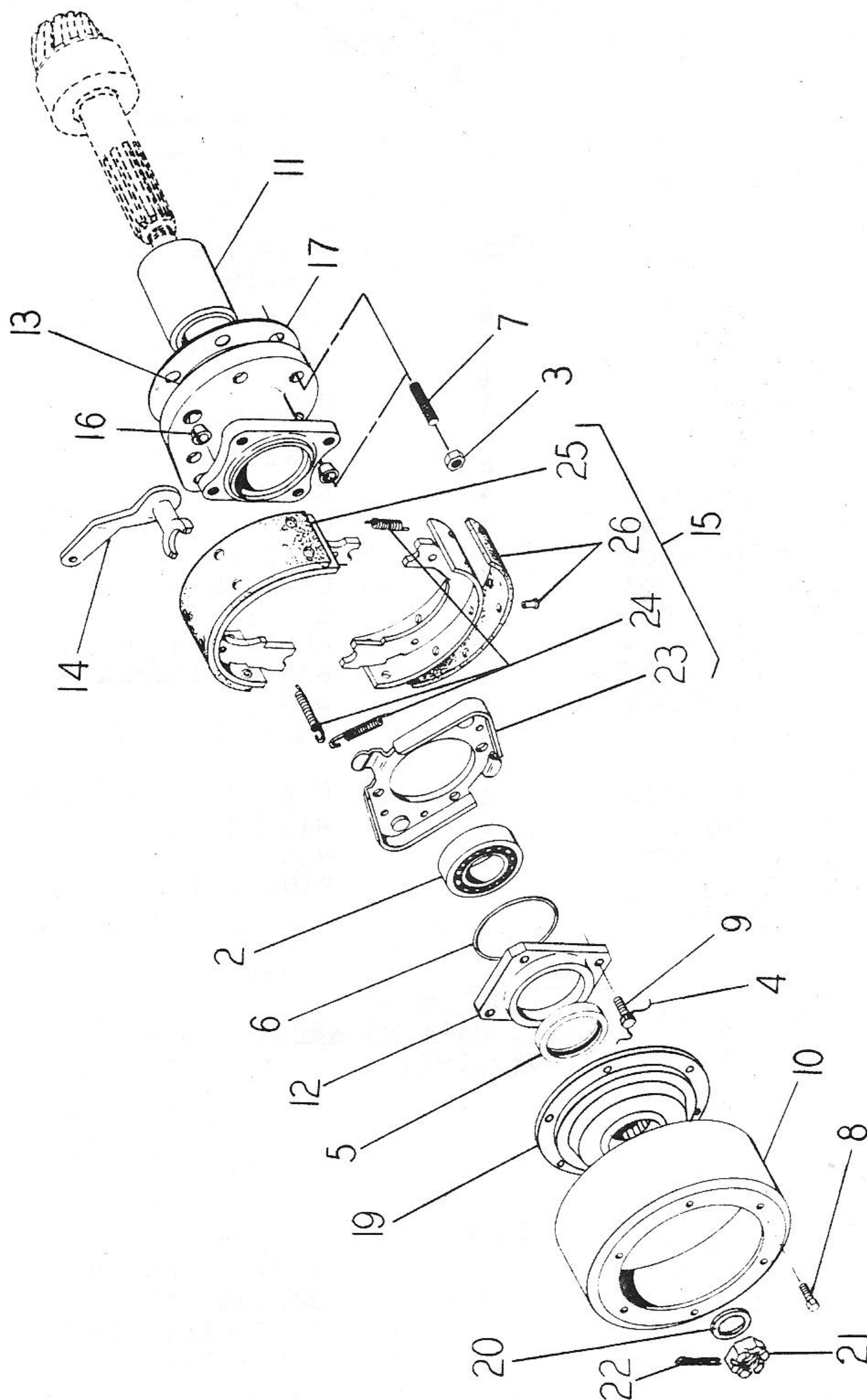
LEGEND: ☐ SOLD ONLY AS A KIT OR MATCHED SET

\*\* SERVICEABLE PARTS OF THIS ASSEMBLY ARE SHOWN SEPARATELY UNDER THE ASSEMBLY NUMBER

GIVE MACHINE SERIAL NUMBER WHEN ORDERING PARTS

EFFECTIVE SER







911-16026 \*BRAKE GROUP, PARKINGREV. 9ITEMS SHOWN  
IN FIG. 12

<u>ITEM</u>	<u>PART NO.</u>	<u>QUAN.</u>	<u>DESCRIPTION</u>
2	G138	1	BEARING
3	L260	6	NUT, LOCK
4	L400	1	WIRE, LOCK
5	S1160	1	SEAL
6	S2816	1	O-RING
7	TA2123	6	STUD
8	T6GG12	6	SCREW, CAP
9	T8GGW20	4	SCREW, CAP
10	911-16009	1	DRUM
11	911-16002	1	SPACER
12	911-16003	1	CARTRIDGE
13	911-16001	1	CARRIER
14	911-16014	1	LEVER ASSEMBLY
15	<u>911-16007</u> *	1	BRAKE ASSEMBLY, PARKING
16	912-94005	2	WEDGE
17	GA35A	1	SHIM SET
19	911-16012	1	FLANGE, COMPANION
20	WI4HB	1	WASHER
21	911-15006	1	NUT
22	L122	1	PIN, COTTER

911-16007 \*BRAKE, PARKING REPAIR PARTS08-11-70ITEMS SHOWN  
IN FIG. 12

<u>ITEM</u>	<u>PART NO.</u>	<u>QUAN.</u>	<u>DESCRIPTION</u>
23	911-16016	1	PLATE, BACKING
24	911-16017	1	SPRING KIT
25	911-16018	1	SHOE KIT, LINED
26	911-16019	1	LINING KIT

LEGEND: ☐ SOLD ONLY AS A KIT OR MATCHED SET

\*\* SERVICEABLE PARTS OF THIS ASSEMBLY ARE SHOWN SEPARATELY UNDER THE ASSEMBLY NUMBER

GIVE MACHINE SERIAL NUMBER WHEN ORDERING PARTS

EFFECTIVE SER